



HIGH MUSEUM OF ART ATLANTA

1280 PEACHTREE STREET, N.E. • ATLANTA, GEORGIA 30309

FOR IMMEDIATE RELEASE

Jan. 24, 2022

MEDIA ALERT

**Ticket reservations open today for
[“The Obama Portraits Tour”](#) free admission days
at the High Museum of Art**

WHAT/WHEN: Ticket reservations available starting today for free admission days for [“The Obama Portraits Tour”](#) at the High Museum of Art

The High Museum of Art will offer four free admission days for its newest exhibition [“The Obama Portraits Tour,”](#) featuring the portraits of former President Barack Obama and first lady Michelle Obama by artists Kehinde Wiley and Amy Sherald. Those **dates include two [Second Sundays](#) (Feb. 13 and March 13), President’s Day (Monday, Feb. 21) and March 9.** [“The Obama Portraits Tour”](#) will be on view at the High through March 20, 2022.

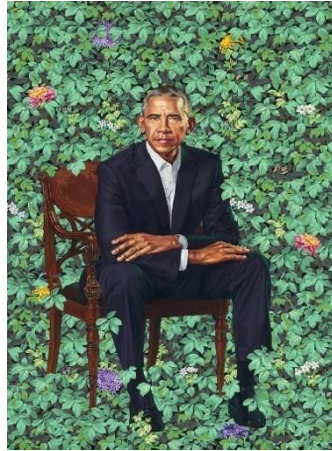
WHERE: Visit www.high.org/exhibition/the-obama-portraits-tour to reserve tickets for free admission days.

HOW: Advance tickets must be reserved through the High’s website: www.high.org. Due to the nature and popularity of the exhibition, all tickets are for specific time slots. Exhibition tickets cannot be exchanged or transferred.

MORE DETAILS: An extensive FAQ page is online at www.high.org/obama-faq with more specifics about ticket reservations, purchases, tips for planning your visit and details about the exhibition experience.

SUPPORT:

Support for community access ticketing is provided by The Coca-Cola Foundation. Generous support for [Second Sundays](#) is provided by the Lettie Pate Evans Foundation, which is part of the family of foundations that also includes the Robert W. Woodruff Foundation.

ABOUT THE EXHIBITION:

(L): “Barack Obama” by Kehinde Wiley, oil on canvas, 2018. National Portrait Gallery, Smithsonian Institution. The National Portrait Gallery is grateful to the following lead donors for their support of the Obama portraits: Kate Capshaw and Steven Spielberg; Judith Kern and Kent Whealy; Tommie L. Pegues and Donald A. Capoccia. © 2018 Kehinde Wiley. Courtesy of Smithsonian’s National Portrait Gallery. (R): “Michelle LaVaughn Robinson Obama” by Amy Sherald, oil on linen, 2018. National Portrait Gallery, Smithsonian Institution. The National Portrait Gallery is grateful to the following lead donors for their support of the Obama portraits: Kate Capshaw and Steven Spielberg; Judith Kern and Kent Whealy; Tommie L. Pegues and Donald A. Capoccia. Courtesy of Smithsonian’s National Portrait Gallery.

The High Museum of Art presents the portraits of former President Barack Obama and first lady Michelle Obama by artists Kehinde Wiley and Amy Sherald, respectively, as part of “The Obama Portraits Tour,” organized by the Smithsonian’s National Portrait Gallery. The portraits are on view through March 20, 2022, in the High’s Stent Family Wing special exhibition galleries.

In addition to the portraits, the exhibition features an approximately eight-minute video providing background on the National Portrait Gallery’s commissioning of the portraits and putting them into the context of the national collection of presidential portraits. During the run of the exhibition, the High will present public programs including a conversation with the exhibition curators, host student field trips, and offer teachers professional development opportunities presented in collaboration with the National Portrait Gallery.

The Portrait Gallery holds the nation’s only complete collection of U.S. presidential portraits that is accessible to the public. It began commissioning presidential portraits in 1994 with George H. W. Bush and commissioned its first portrait of a first lady in 2006 with Hillary Rodham Clinton.

The paintings by Wiley and Sherald are the subject of a richly illustrated book, “The Obama Portraits” (2020), which delves into the making of these two artworks. Published by the Smithsonian’s National Portrait Gallery in partnership with Princeton University Press, the book,

along with merchandise inspired by the artworks, can be purchased at the High Museum Shop and online at museumshop.high.org.

The tour commenced June 18, 2021, at the Art Institute of Chicago and continues through May 30, 2022. Additional tour locations include the Brooklyn Museum, the Los Angeles County Museum of Art and The Museum of Fine Arts, Houston.

The Smithsonian's National Portrait Gallery recognizes the lead donors to the Obama portraits: Kate Capshaw and Steven Spielberg; Judith Kern and Kent Whealy; Tommie L. Pegues and Donald A. Capoccia; Clarence, DeLoise and Brenda Gaines; The Stoneridge Fund of Amy and Marc Meadows; Robert E. Meyerhoff and Rheda Becker; and Catherine and Michael Podell. For more on the Portrait Gallery and the full tour schedule, visit npg.si.edu/obamaportraitstour.

Exhibition Organization and Support

"The Obama Portraits Tour" is organized by the Smithsonian's National Portrait Gallery, Washington, D.C. Support for the national tour has been generously provided by Bank of America. Community Access Ticketing at the High has been made possible by the Coca-Cola Foundation. This exhibition has been made possible at the High by funding from lead supporters BlackRock, Graphic Packaging International and Mack Wilborn; funders Kent and Tamara Kelley and Sally and Allen McDaniel; Premier Exhibition Series Sponsor Delta Air Lines, Inc.; Premier Exhibition Series Supporters Harry Norman Realtors, ACT Foundation, Inc., Sarah and Jim Kennedy, Louise Sams and Jerome Grilhot, Dr. Joan H. Weens Estate, and wish foundation; Benefactor Exhibition Series Supporters Robin and Hilton Howell; Ambassador Exhibition Series Supporters The Antinori Foundation, Corporate Environments, The Arthur R. and Ruth D. Lautz Charitable Foundation, and Elizabeth and Chris Willett; and Contributing Exhibition Series Supporters Farideh and Al Azadi, Sandra and Dan Baldwin, Lucinda W. Bunnan, Marcia and John Donnell, Mrs. Peggy Foreman, Helen C. Griffith, Mrs. Fay S. Howell/The Howell Fund, Mr. and Mrs. Baxter Jones, Joel Knox and Joan Marmo, Dr. Joe B. Massey, Margot and Danny McCaul, The Ron and Lisa Brill Family Charitable Trust, Wade Rakes and Nicholas Miller, The Fred and Rita Richman Fund, In Memory of Elizabeth B. Stephens, USI Insurance Services, and Mrs. Harriet H. Warren. Generous support is also provided by the Alfred and Adele Davis Exhibition Endowment Fund, Anne Cox Chambers Exhibition Fund, Barbara Stewart Exhibition Fund, Dorothy Smith Hopkins Exhibition Endowment Fund, Eleanor McDonald Storza Exhibition Endowment Fund, The Fay and Barrett Howell Exhibition Fund, Forward Arts Foundation Exhibition Endowment Fund, Helen S. Lanier Endowment Fund, Isobel Anne Fraser—Nancy Fraser Parker Exhibition Endowment Fund, John H. and Wilhelmina D. Harland Exhibition Endowment Fund, Katherine Murphy Riley Special Exhibition Endowment Fund, Margaretta Taylor Exhibition Fund, and the RJR Nabisco Exhibition Endowment Fund.

About the High Museum of Art

Located in the heart of Atlanta, the High Museum of Art connects with audiences from across the Southeast and around the world through its distinguished collection, dynamic schedule of special exhibitions and engaging community-focused programs. Housed within facilities designed by Pritzker Prize-winning architects Richard Meier and Renzo Piano, the High features a collection of more than 18,000 works of art, including an extensive anthology of 19th- and 20th-century American fine and decorative arts; major holdings of photography and folk and

self-taught work, especially that of artists from the American South; burgeoning collections of modern and contemporary art, including paintings, sculpture, new media and design; a growing collection of African art, with work dating from prehistory through the present; and significant holdings of European paintings and works on paper. The High is dedicated to reflecting the diversity of its communities and offering a variety of exhibitions and educational programs that engage visitors with the world of art, the lives of artists and the creative process. For more information about the High, visit www.high.org.

#

DIGITAL IMAGES AVAILABLE UPON REQUEST

Media contact:

Marci Tate Davis
High Museum of Art
Manager of Public Relations
404-733-4585
marci.davis@high.org