

H I G H

A Visual Guide to Visiting the High Museum of Art



The High Museum of Art is dedicated to meeting its audiences at the intersection of culture and community. We invite you to use the museum as a place to find inspiration, discover new ideas, meet old friends, and make new ones.



The High is located at 1280 Peachtree Street, N.E., in Midtown Atlanta. There are a few ways to get here.

By Train



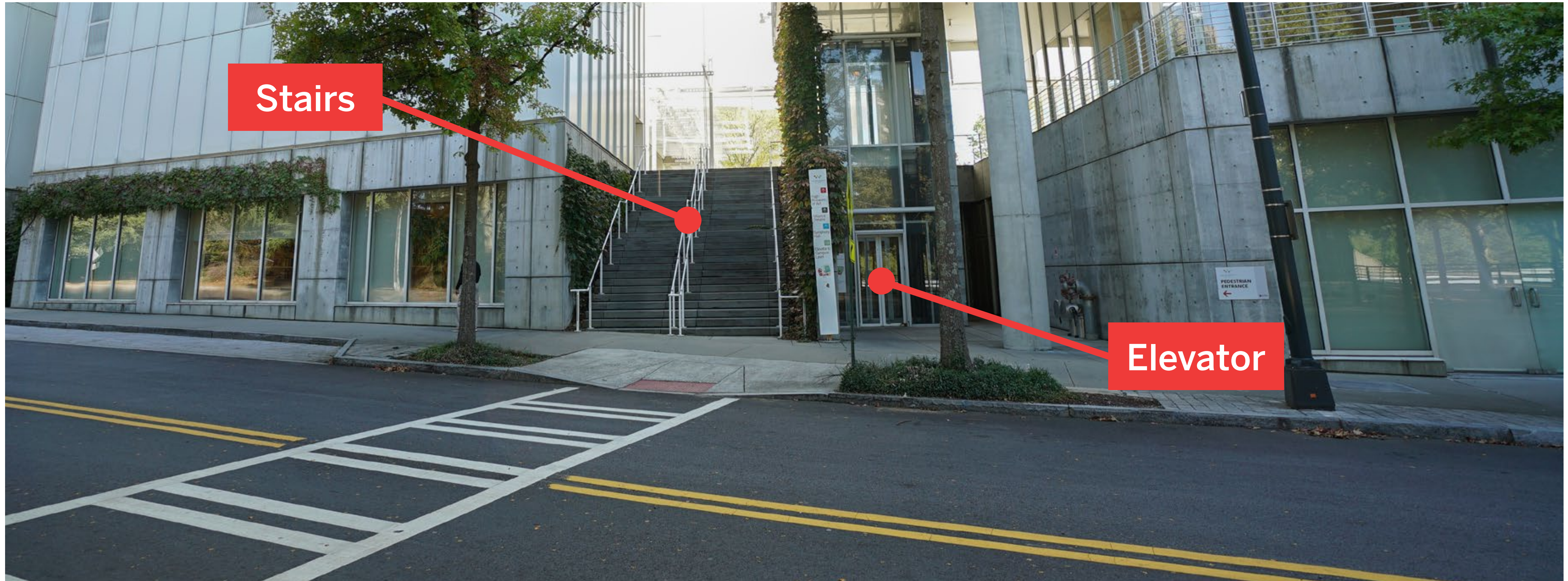
If you take the MARTA train, you will ride to Arts Center Station (N5). Use the eastern exit of the station, as seen in the image above.

By Train



Follow the signs that say Woodruff Arts Ctr./High Museum. Go up two levels and cross the bridge to Arts Center Way. You will then be across the street from the Woodruff Arts Center campus.

By Train



Cross Arts Center Way using the pedestrian crosswalk. From there, you can take the stairs or the elevator up to Campus Level. The museum entrance will be on your left.

By Car



If you drive, you may park in the Woodruff Arts Center parking garage or another garage nearby. The Woodruff Arts Center parking garage entrance is on Arts Center Way. Take a ticket on your way into the garage. You will need this ticket to pay upon exiting.

By Car



In the southeast corner of the Woodruff Arts Center parking garage, there is a double elevator that will take you up to Campus Level. As you exit on Campus Level, the museum entrance will be to your left across the Sifly Piazza.

By Car

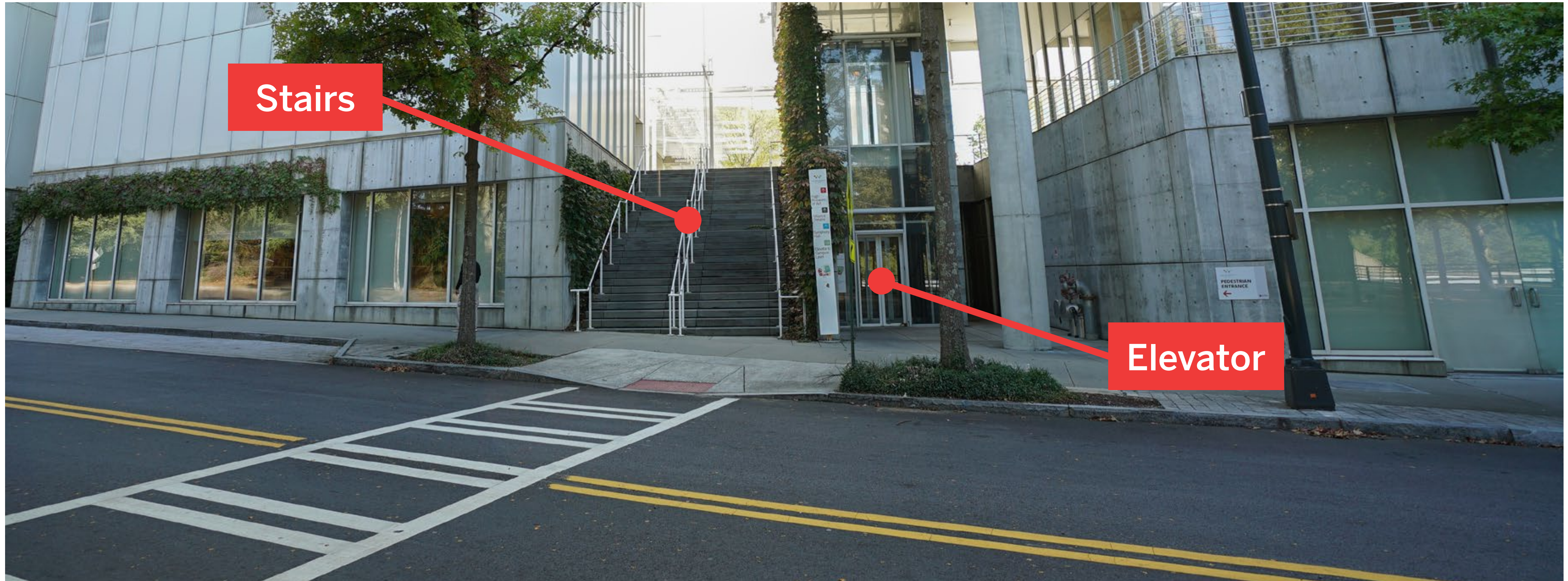


In the northwest corner of the Woodruff Arts Center parking garage, there is a single elevator that will take you to Level P5.



As you exit on Level P5, turn right and take the second elevator up to Campus Level. From there, the museum entrance will be on your left.

By Rideshare or MARTA Mobility



If you use MARTA Mobility or a rideshare service, ask your driver to drop you off at the accessible crosswalk on Arts Center Way. From there, you can take the stairs or the elevator up to Campus Level. The museum entrance will be on your left.



This is the museum entrance. Once you enter the museum, you will be in the Taylor Lobby.



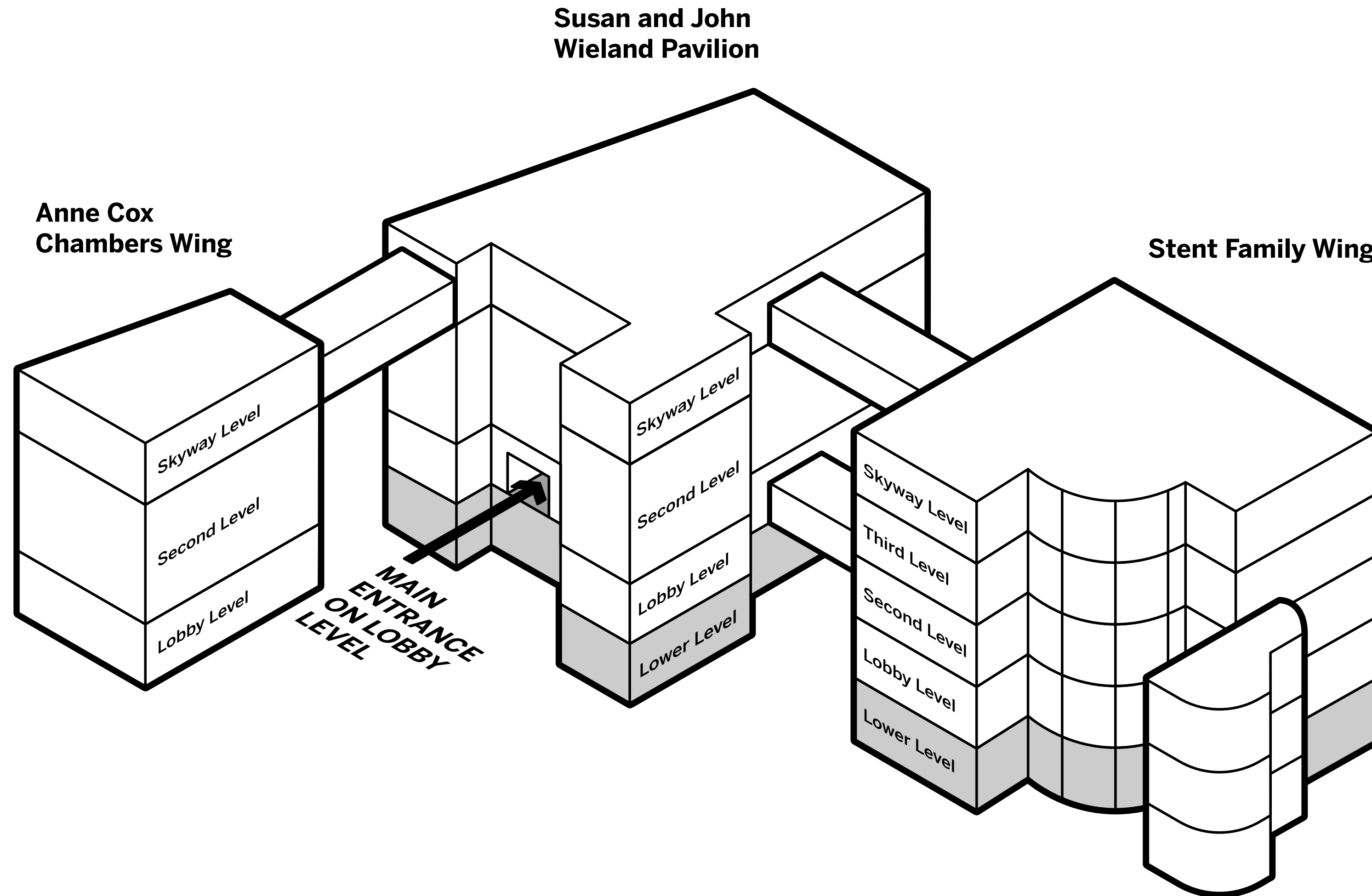
As you enter, you will see a security officer to the right. They can assist with coat check or provide a wheelchair, stroller, or stool to use during your visit.

You will see other security officers throughout the museum. They are there to help people and keep the art safe.

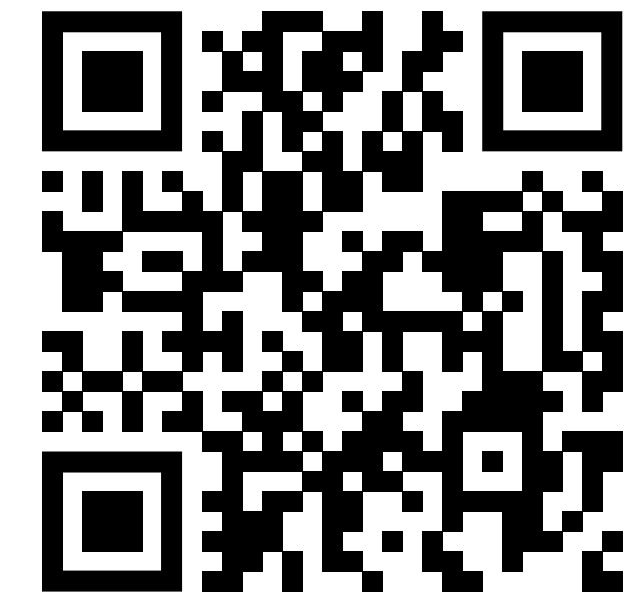


The Admissions and Information desk will be to your left. Guest Relations staff can assist you with purchasing tickets or scanning your pre-purchased tickets, answer any questions about your visit, or sign you up for smARTbox.

In the Taylor Lobby, you can also find restrooms, CJ's Café, and the Museum Shop.



General Map
QR Code



Sensory Map
QR Code

The museum is made up of three buildings. You can access a digital museum map and a digital sensory map using these QR codes.

We hope you enjoy exploring the museum.
Please keep these guidelines in mind while
you are in the galleries:

Please take photos! Non-flash photography is
encouraged in the museum's collection galleries.

Strollers are okay!

No food or drink is allowed in the galleries.

Please do not touch the art.

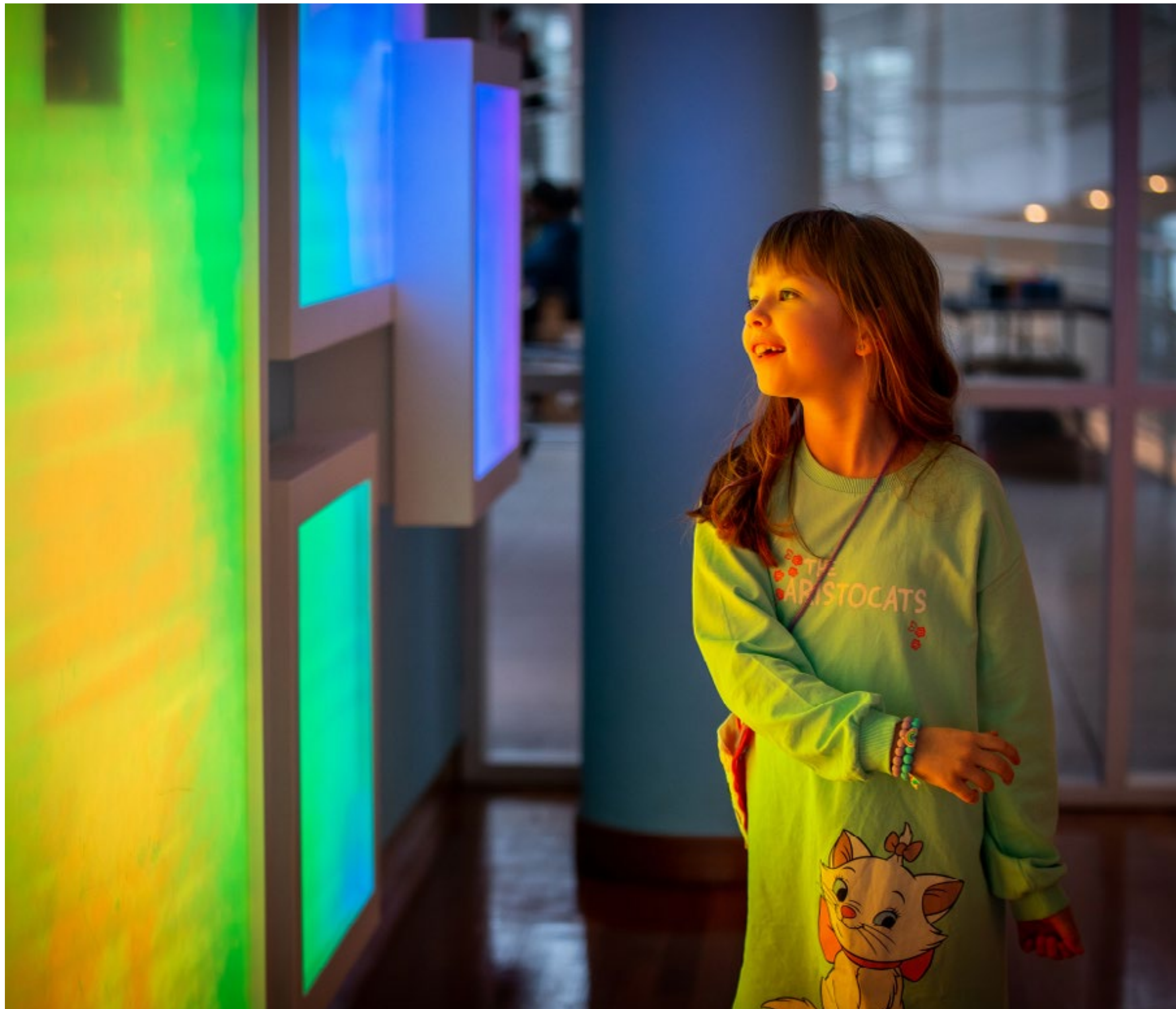
You can find more tips for visiting the museum
at high.org/visit.





There is seating located throughout the galleries. If you need a longer break, you can also rest in the Robinson Atrium, the Taylor Lobby, or outside on the Orkin Terrace or the Sifly Piazza.

Your admission ticket is good for the whole day. If you want to leave and come back, just show your ticket to the security officer when you come back to the museum.



If you are visiting with children, be sure to stop by the Greene Family Learning Gallery on the Lobby Level. In this interactive space, kids can explore, play, and create art.



Families with children ages two to twelve can also sign up for smARTbox at the Admissions and Information desk.



When you are ready to leave, you can exit through the Taylor Lobby and out the main museum entrance. We hope to see you again soon!

More Information

Address: 1280 Peachtree Street, N.E., Atlanta, Georgia 30309
Twenty-Four-Hour Recorded Info: 404-733-4400

Visit high.org for information about exhibitions, programs, and events.
To receive newsletters about these and other programs, sign up at high.org/e-newsletter.

Please note that some days are busier than others. The museum is quietest midweek in the afternoon Tuesday through Friday. The museum is busiest during these recurring events:

Access for All, offered on the third Wednesday of every month from 10 a.m. to 5 p.m.

HIGH Frequency Fridays, offered on the first Friday of every month from 6 to 10 p.m.

First Saturdays, offered on the first Saturday of every month from 10 a.m. to 5 p.m.

Friday Jazz, offered on the third Friday of every month from 6 to 10 p.m.

UPS Second Sundays, offered on the second Sunday of every month from 12 noon to 5 p.m.

The museum is dedicated to reflecting the diversity of its communities and offering a variety of exhibitions and educational programs that engage visitors with the world of art, the lives of artists, and the creative process. Please note that our efforts to make our resources, programs, and museum more accessible are ongoing. If you have suggestions or feedback about accessibility, please contact us at access@high.org.