

H I G H

Social Story for Visitors



I am going to the High Museum of Art with my family. The High Museum of Art is an art museum in Midtown Atlanta.

We can read this story together to learn more about how to get to the museum, some of the people we will meet, and what we can see and do while we are there.



There are a few ways to get to the High. We can drive a car, take a bus, or ride a train.



If we drive a car, we can park in a parking deck underneath the museum. From the parking deck, we can ride the elevator to Campus Level. If we don't want to use the elevator, we can use the stairs.



If we take a train or a bus, we will exit the MARTA station on Arts Center Way. From there, we will cross the street and take the elevator or stairs up one level to Campus Level.



When we arrive at Campus Level, we will see the Sifly Piazza with tables and chairs. We will also see some outdoor sculptures. We won't touch the artworks at the museum, even if they are outside.



This is the entrance to the museum. Once we go inside, we will be in the Taylor Lobby.



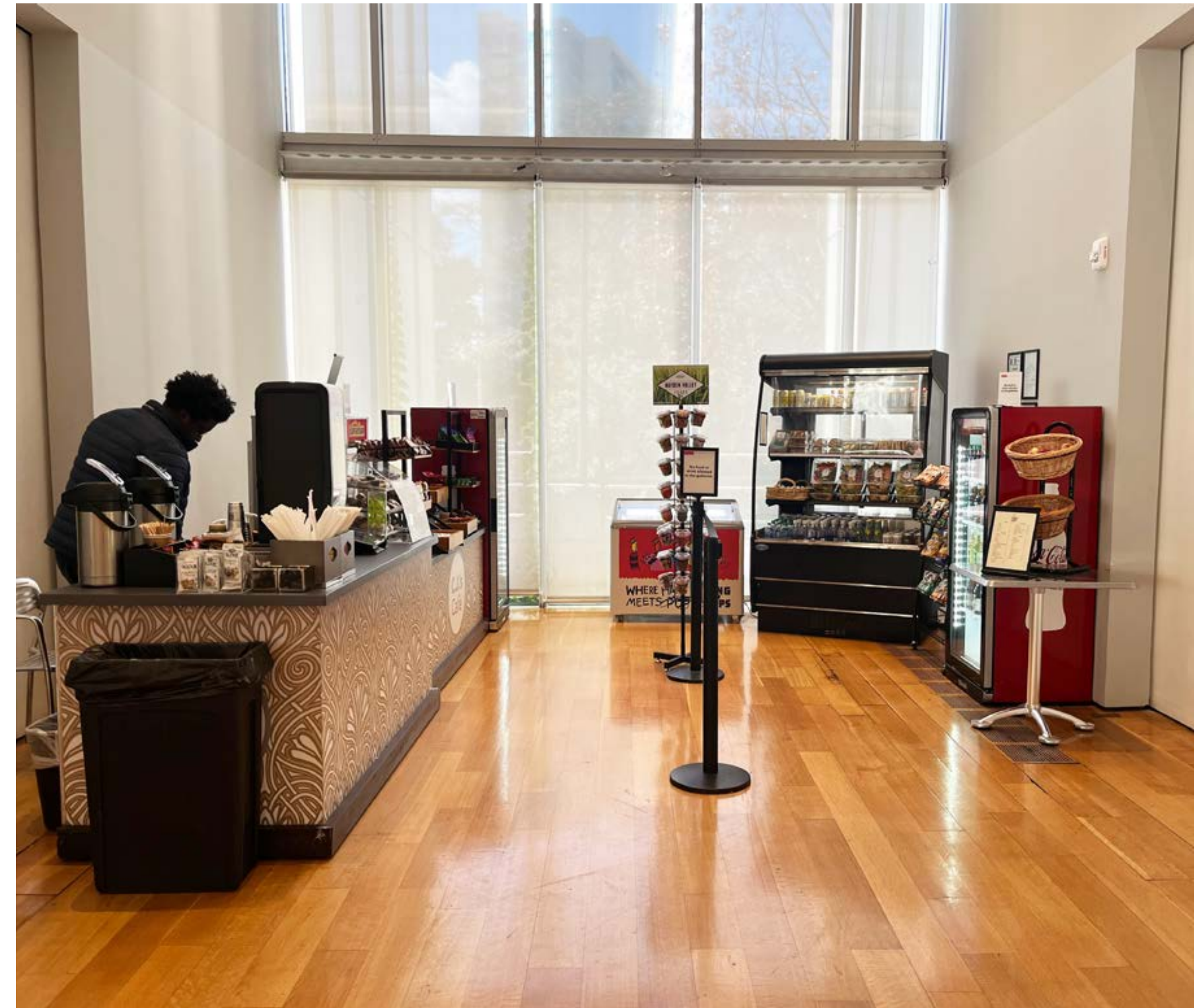
We will see a friendly security officer on our right. The security officer can give us a wheelchair, folding stool, or stroller. They can also help us check our belongings at coat check. We will get our belongings back at the end of our visit.

We will see more security officers around the museum. They are here to help people and to keep visitors and the art safe.



We will scan or purchase tickets at the Admissions and Information desk. We may have to wait a few minutes if there is a line.

We can ask the people at the desk for information about where to go and what to see. We can also ask them for fidgets, noise-canceling headphones, sunglasses, or a [sensory map](#).



We will also see a café, the Museum Shop, and restrooms in the Taylor Lobby. There are accessible restrooms on most floors of the museum.

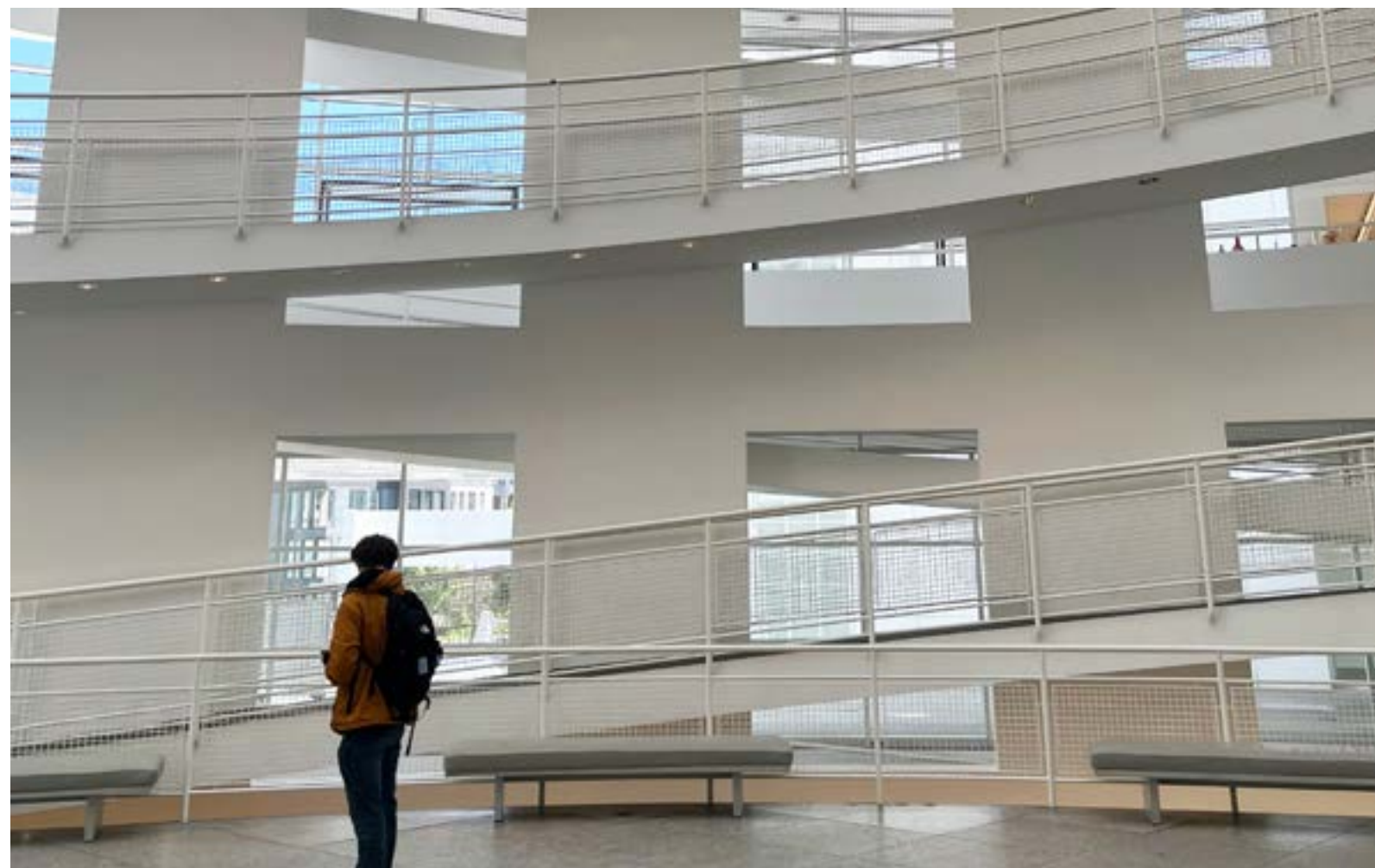


In the Taylor Lobby, we can get a smARTbox. I can use the art supplies inside the smARTbox to explore an artwork in the galleries.

I get to take my smARTbox home with me and can come back every month for new art supplies and activities!



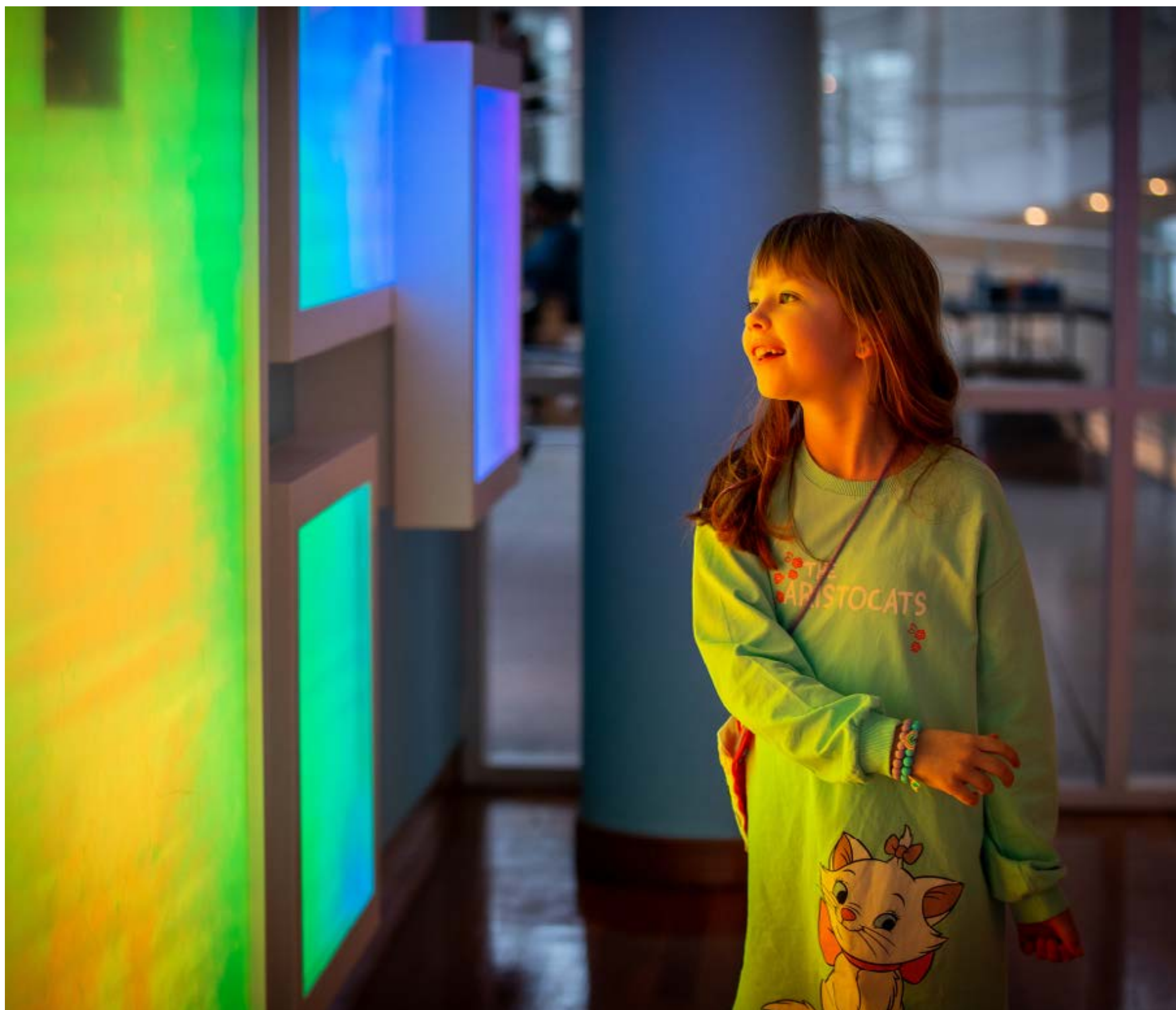
As we go through the museum, we will see other staff members. They wear red or black lanyards or suits like the one above. We can ask any of these people for help or more information during our visit.



To move around the museum, we can use an elevator, a ramp, or stairs.



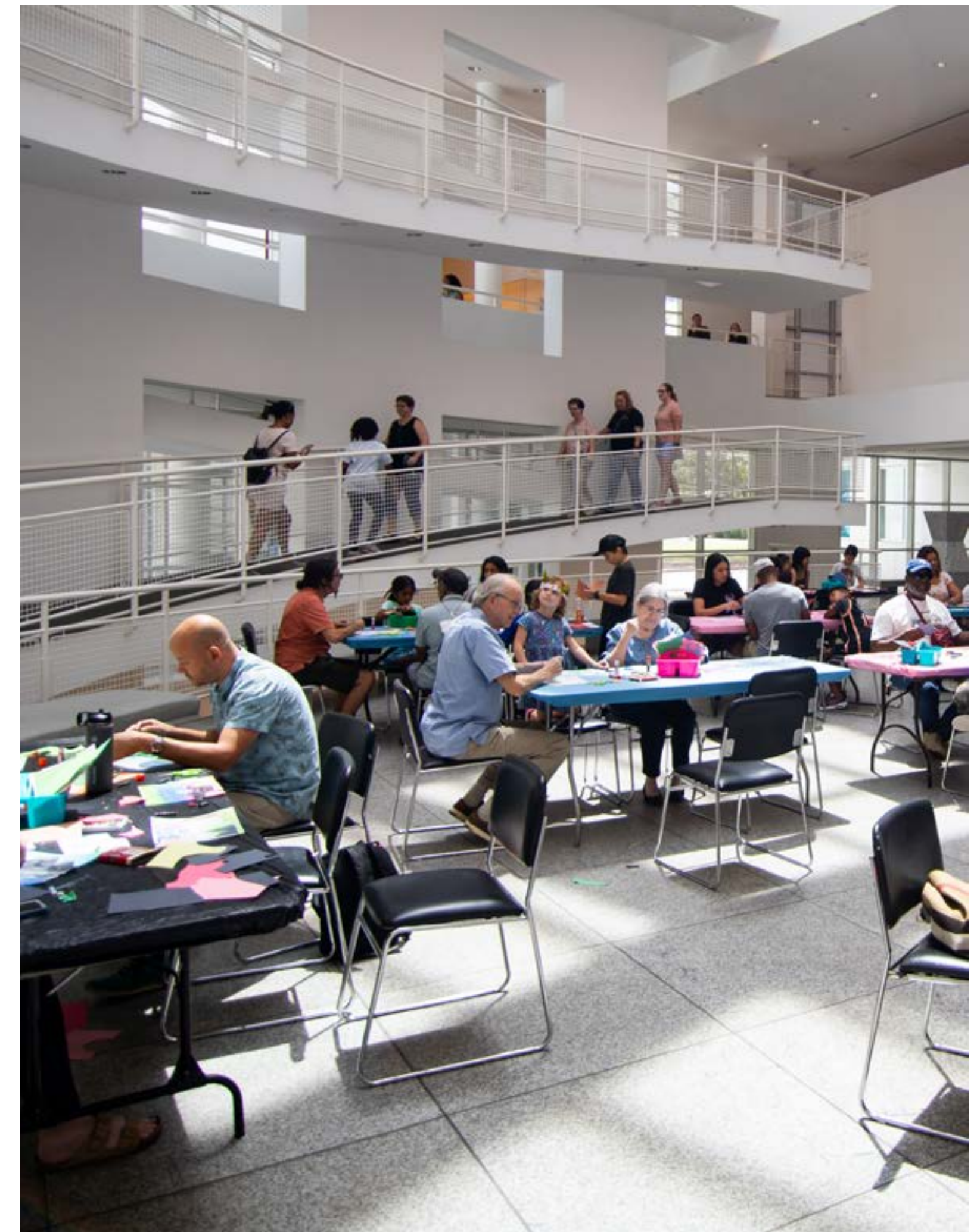
We can look at the art in the museum and share our ideas about what we see with our friends or family. While I am in the galleries, I will walk slowly and use my quiet voice.



We can visit the Greene Family Learning Gallery on the Lobby Level if we want to touch, experiment, create art, and play.



The museum can be very quiet. Other times, like on weekends or during big events, the museum can be crowded and loud. If we need to find a quiet space, we can ask a staff member or use the [sensory map](#). We can find more information about when the museum is busy at the end of this story.



There are a lot of windows in the Robinson Atrium that make it very bright on sunny days. The atrium can be loud when there are many people in it. On sunny days, it is also bright on the Skyway levels of the museum.



We may see screens with sound and video in a few galleries. We can choose to sit and watch or to walk past them.



If we need to take a break, we can sit in the Robinson Atrium, the Taylor Lobby, or in the galleries on one of the gray benches. We can also sit outside on the covered Orkin Terrace or on the Sifly Piazza.

We can leave the museum and come back in if we need to. Our admission tickets are good for the whole day!

More Information

Address: 1280 Peachtree Street, N.E., Atlanta, Georgia 30309
Twenty-Four-Hour Recorded Info: 404-733-4400

Visit high.org for information about exhibitions, programs, and events.
To receive newsletters about these and other programs, sign up at high.org/e-newsletter.

Please note that some days are busier than others. The museum is quietest midweek in the afternoon Tuesday through Friday. The museum is busiest during these recurring events:

Access for All, offered on the third Wednesday of every month from 10 a.m. to 5 p.m.

HIGH Frequency Fridays, offered on the first Friday of every month from 6 to 10 p.m.

First Saturdays, offered on the first Saturday of every month from 10 a.m. to 5 p.m.

Friday Jazz, offered on the third Friday of every month from 6 to 10 p.m.

UPS Second Sundays, offered on the second Sunday of every month from 12 noon to 5 p.m.

The museum is dedicated to reflecting the diversity of its communities and offering a variety of exhibitions and educational programs that engage visitors with the world of art, the lives of artists, and the creative process. Please note that our efforts to make our resources, programs, and museum more accessible are ongoing. If you have suggestions or feedback about accessibility, please contact us at access@high.org.