

Scavenger Hunt

Follow the clues in this scavenger hunt through all seven collecting areas in the High Museum of Art's collection! Write your answers below each clue. Once you have solved every clue, answer the bonus question at the bottom by unscrambling the letters.

1



I am an oil painting created in France in 1916. Who painted me? I am located in the European Art collection.

--	--	--	--	--	--	--

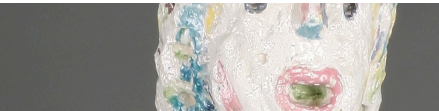
2



I am a painting by American artist Georgia O'Keeffe of a flower called red canna lily. In what town in New York did Georgia O'Keeffe discover her love for these flowers? I am located in the American Art galleries.

--	--	--	--	--	--	--	--	--

3



I am a sculpture created by Viola Frey in the style of Abstract Expressionism. Frey's first solo show, which helped solidify her reputation, was held at what museum? I am located in the Decorative Arts and Design galleries.

--	--	--	--	--	--	--

4



I am a nineteenth-century mask created by an artist in Cameroon. I feature different materials, but there is one material that signifies wealth. What is it? I am located in the African Art galleries.

--	--	--	--	--	--	--	--	--

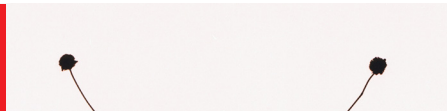
5



I am a quilt created by Marquette Johnson. Johnson was not only a well-known quilter but also a beloved art educator at the High. This work features a quilting element that Johnson learned from her grandmother. What is it called? I am located in the Folk and Self-Taught Art galleries.

--	--	--	--	--	--

6



I am a photograph taken by Harry Callahan and am currently on view in the exhibition *Photography's New Vision: Experiments in Seeing*. My minimalist appearance may not give it away, but what city was I taken in?

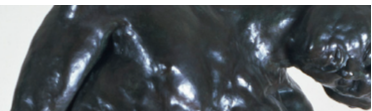
--	--	--	--	--	--

7



I am a sculpture created by Tomashi Jackson. I am made of many layers. One of these layers contains voting flyers. In the wall label, what are those voting flyers called? I am located in the Modern and Contemporary Art galleries.

--	--	--	--	--	--	--

Bonus


Who sculpted *The Shade*, located outside the High's campus? Answer this question by unscrambling the circled letters.

--	--	--	--	--	--

